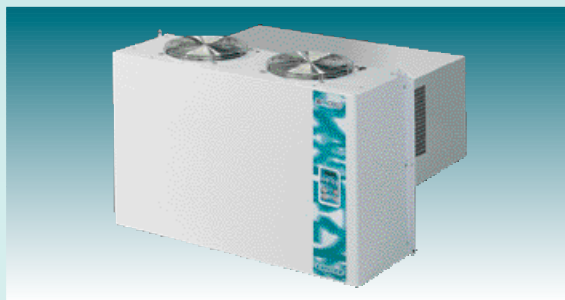




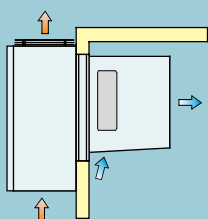
# MONOBLOCCHI PER CELLE FRIGORIFERE / PACKAGED UNITS FOR COLD ROOMS

## BLOCKSYSTEM

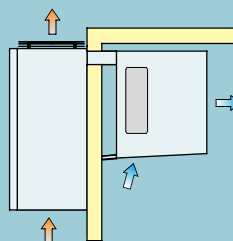
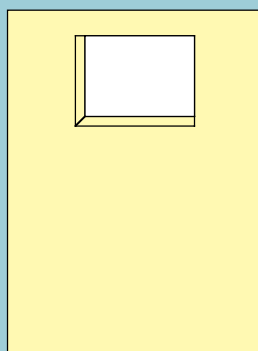


Installazione a parete  
Wall mounting installation

	HBP	MBP	LBP
<b>Campo di esercizio</b> Operating range	+10°C ÷ +2°C	+5°C ÷ -5°C	-15°C ÷ -25°C
<b>Potenza compressore</b> Compressor power	2 HP	2,5 ÷ 10 HP	4 ÷ 20 HP
<b>Potenza frigorifera</b> Refrigerating capacity	4800 W	4900 ÷ 22100 W	3400 ÷ 19400 W
<b>Volume cella</b> Cold room volume	60 m <sup>3</sup>	54 ÷ 329 m <sup>3</sup>	51 ÷ 568 m <sup>3</sup>
<b>Tipo di sbrinamento</b> Defrosting type	A	G-R	G-R



PT...  
(tampono / plug-in)



PA...  
(accavallato / saddle version)

